



LEICESTERSHIRE

FIRE and RESCUE SERVICE

Overview & Scrutiny Committee
November 2014

Safety Event Reporting
2013/14



Summary of 2013/14

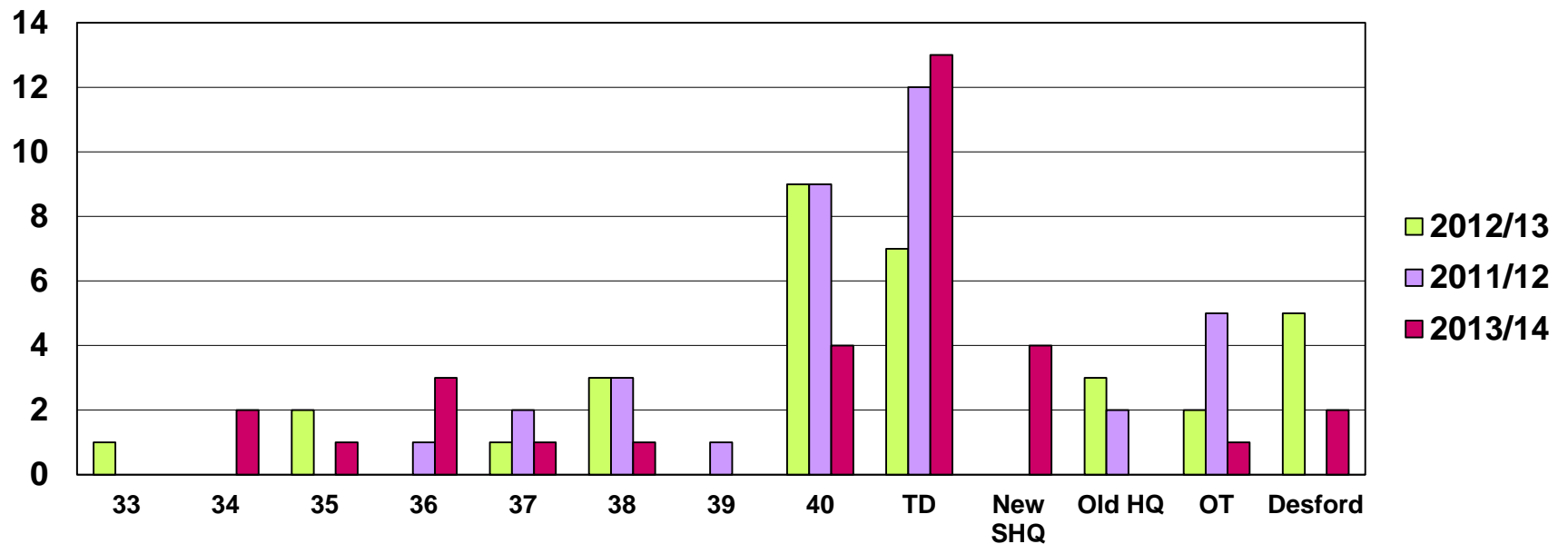
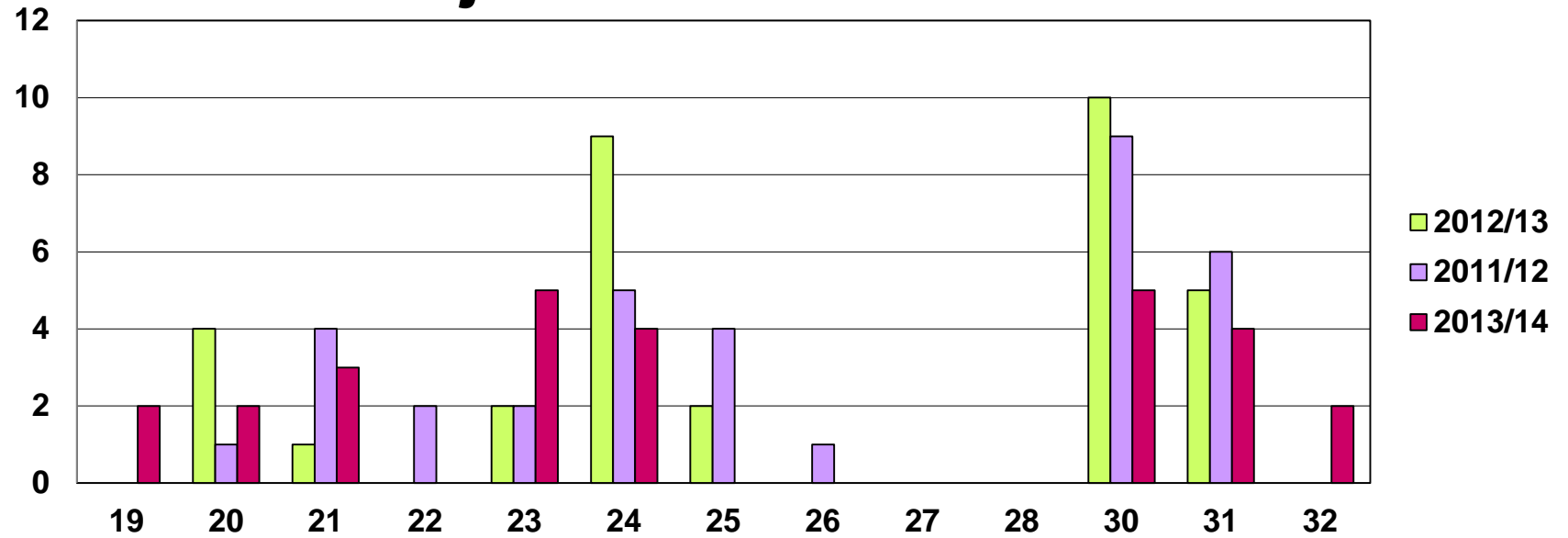
- There has been a **decrease** in **personal injuries** events in 2013/14, compared to the previous year. Increase was 12% below performance target and 11% less than 2012/13 actual
- There has been a slight **increase** in **vehicle events** in 2013/14, compared to the previous year; by 8%. The actual total for 2013/14 is 2% higher than the performance target.
- There has been a healthy 10% **increase** in **near miss** reporting in 2013/14, compared to the previous years actual. However this equates to a 7% shortfall against 2013/14 target.
- There has been 32% **reduction** in **critical equipment** failures for 2013/14 compared to the previous years actual. This equates to a 18% decrease against performance target.

Personal Injuries Totals

IMPACT RATING	2013/14 <i>(target)</i>	2012/13 <i>(target)</i>	2011/12
<i>MINOR</i>	51 <i>(64)</i>	63 <i>(56)</i>	61
<i>MODERATE</i>	8 <i>(3)</i>	3 <i>(3)</i>	8
<i>SERIOUS</i>	0 <i>(0)</i>	0 <i>(0)</i>	0
<i>TOTALS</i>	59 <i>(67)</i>	66 <i>(59)</i>	69



Personal Injuries - Locations



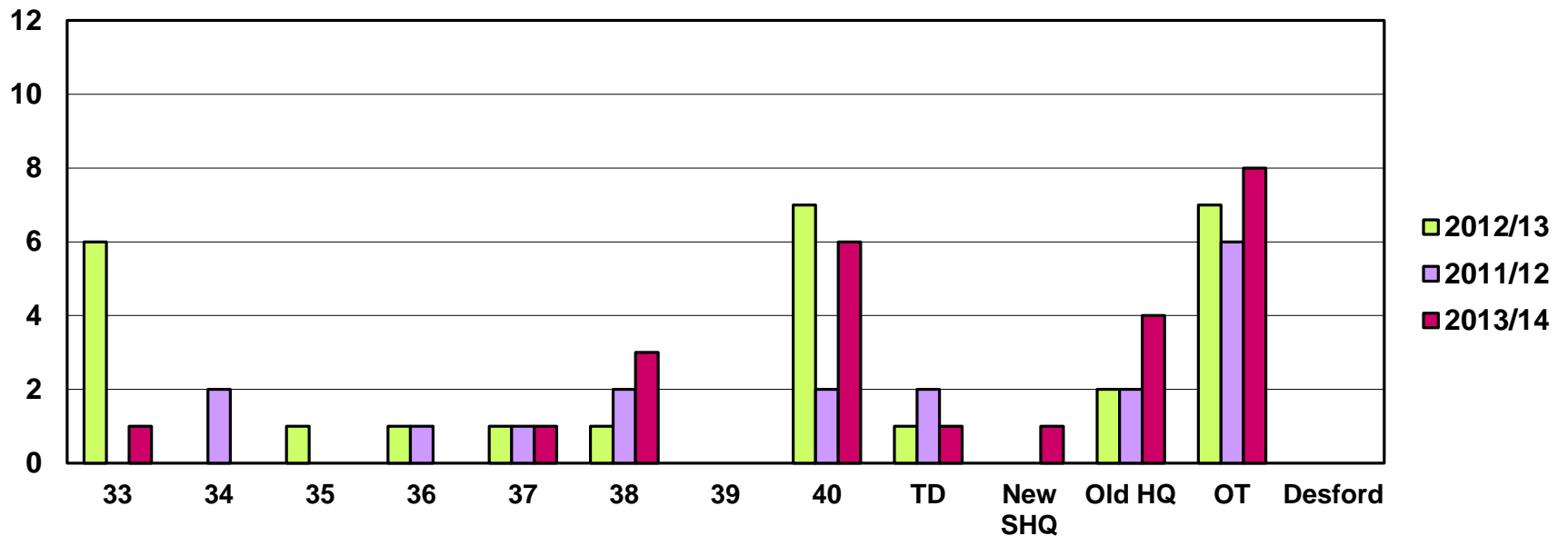
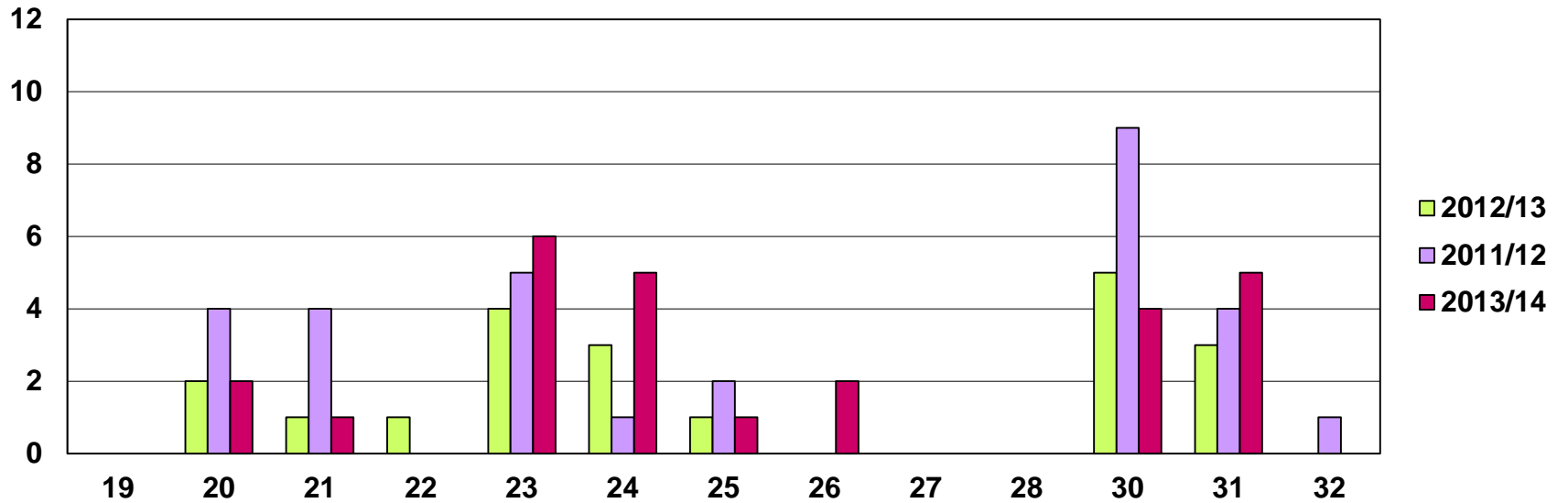


Vehicle Events Totals

IMPACT RATING	2013/14 (target)	2012/13 (target)	2011/12
MINOR	44 (46)	42 (43)	48
MODERATE	6 (4)	5 (3)	10
SERIOUS	1 (0)	0 (0)	0
TOTALS	51 (50)	47 (46)	58



Vehicle Event - Locations



Vehicle Accident Costs 2013/14

VEHICLE INSURANCE COSTS	2013/14 Values	2012/13 Values	2011/12 Values
Total number of LFRS vehicle damage events incurring repair costs	35	32	35
Total cost to LFRS for repairs to vehicles below the minimum insurance threshold	£7,265	£13,249	£10,047
Cost of excess payments made for claims exceeding the minimum threshold	£5,000	£2,000	£5,000
Excess costs reclaimed from third parties	£5,444	£820	£1,582
Total costs, including excess payments	£6,821	£14,429	£13,465

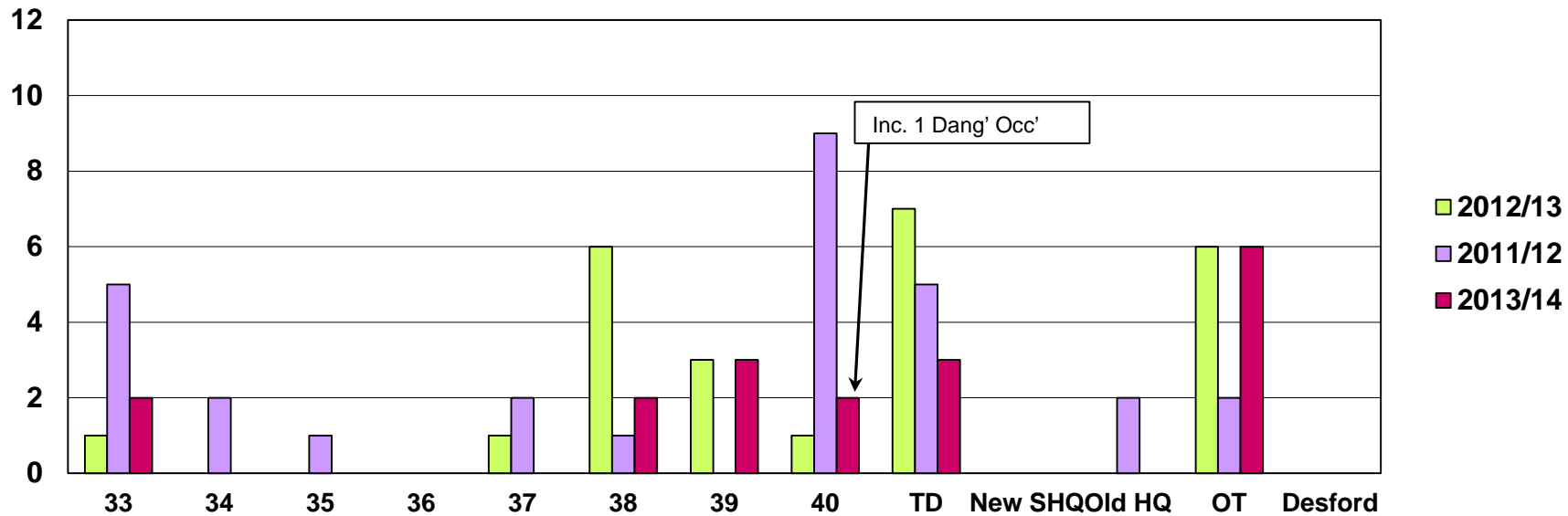
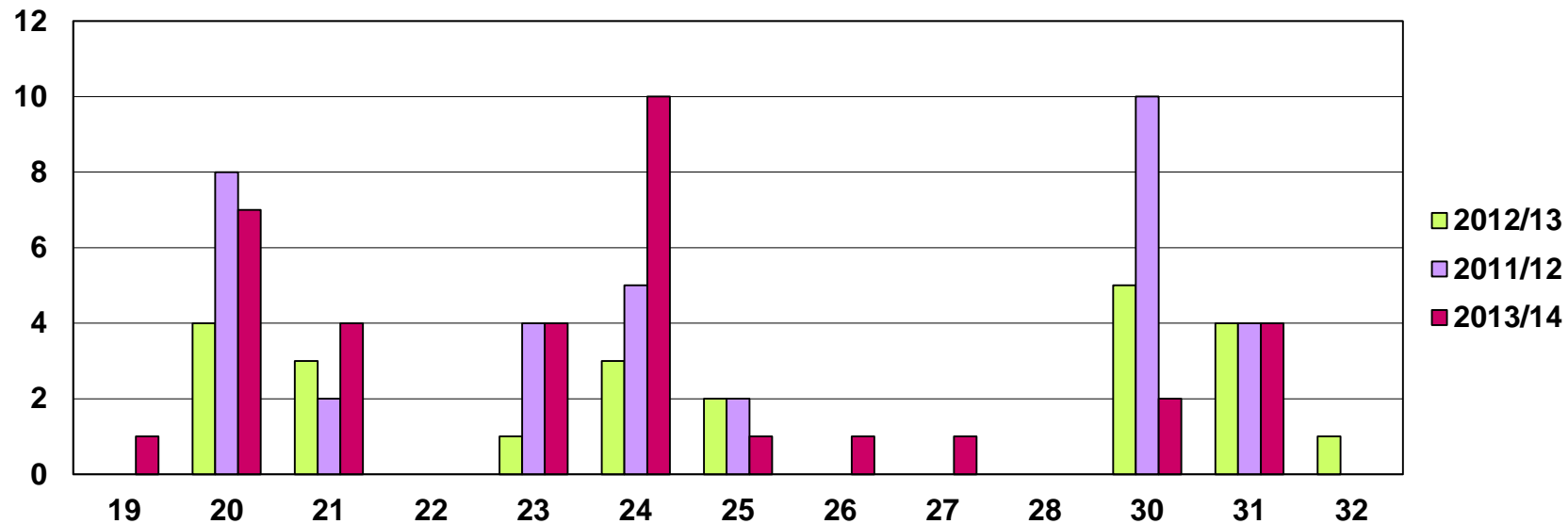
Costs for 2013/14 have been provided by Workshops Department.



Near Miss Events Totals (inc.DO*)

IMPACT RATING	2013/14 <i>(target)</i>	2012/13 <i>(target)</i>	2011/12
MINOR	29 <i>(33)</i>	26 <i>(43)</i>	34
MODERATE	11 <i>(18)</i>	17 <i>(13)</i>	19
SERIOUS	13* <i>(6)</i>	5* <i>(4)</i>	11*
TOTALS	53* <i>(57)</i> <small>(including 1 DO)</small>	48* <i>(60)</i>	64*

Near Miss - Locations

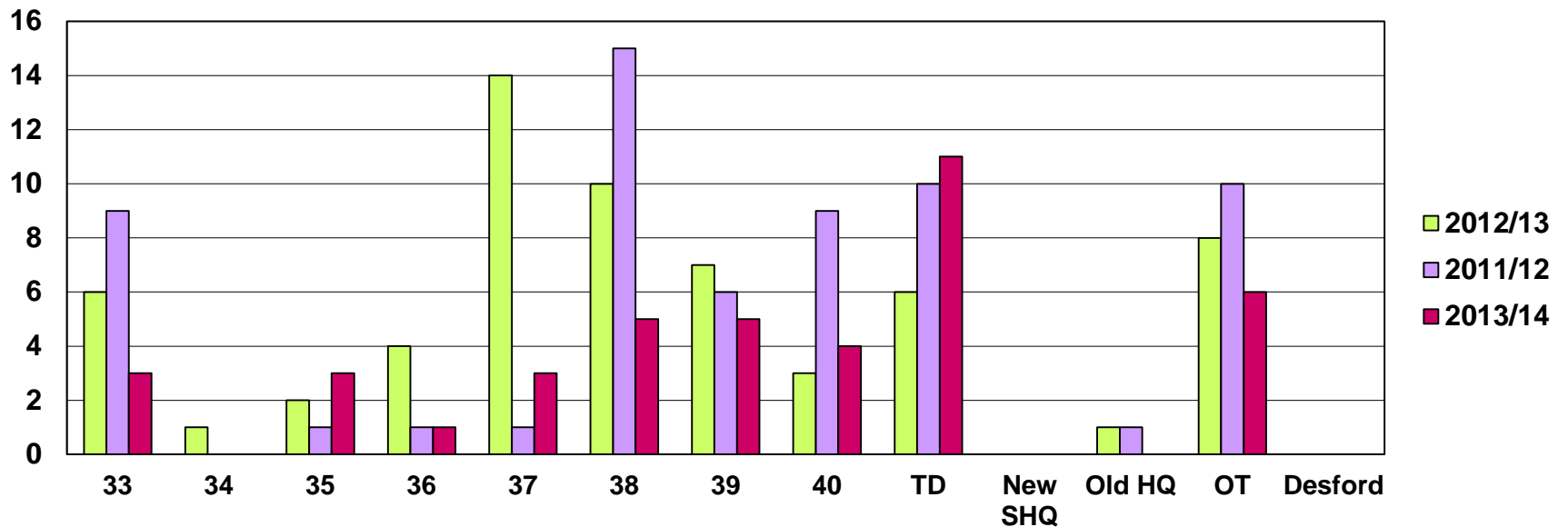
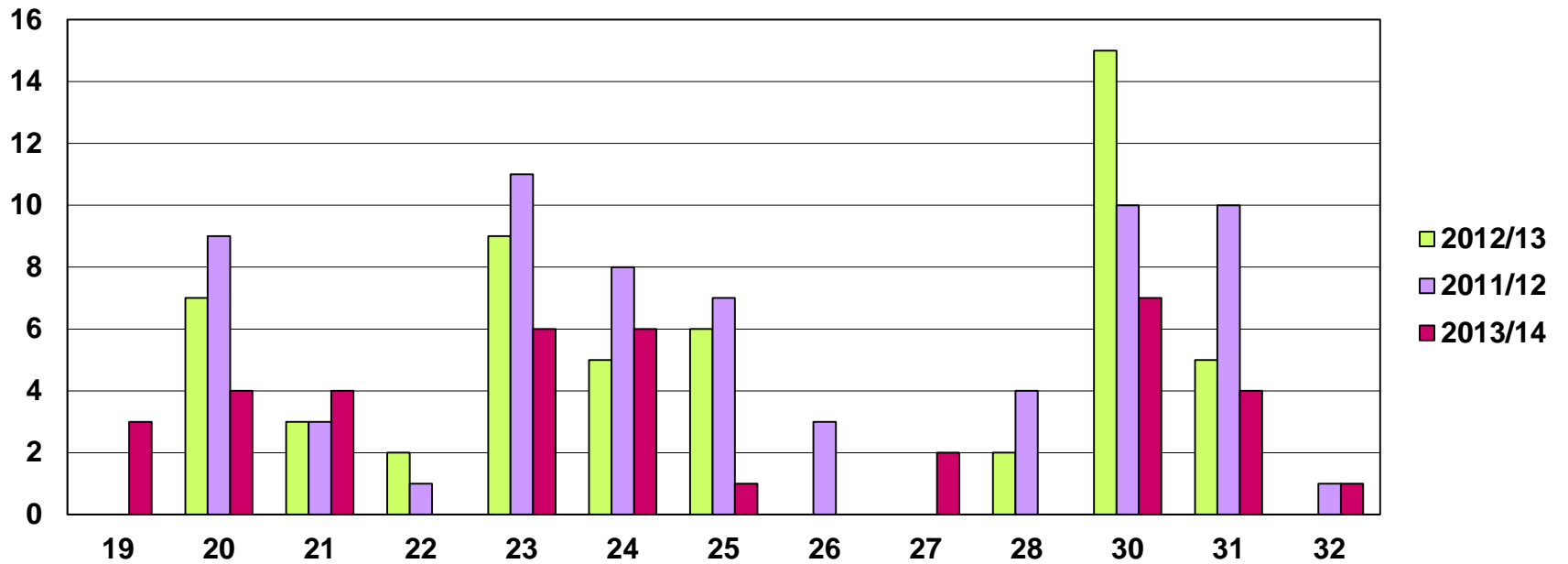




Critical Equipment Failure Totals

IMPACT RATING	2013/14 <i>(target)</i>	2012/13 <i>(target)</i>	2011/12
MINOR	28 <i>(48)</i>	116 <i>(74)</i> <small>(Inc. 2 from Syston Station)</small>	130
MODERATE	28 <i>(37)</i>		
SERIOUS	23 <i>(11)</i>		
TOTALS	79 <i>(96)</i>	116 <i>(74)</i>	130

Critical Equipment Failure - Locations





Types of Critical Equipment failure:

■ 2013/14 ■ 2011/12 ■ 2012/13

