



LEICESTERSHIRE
FIRE and RESCUE SERVICE

Fire Safety in the Home



Safer People, Safer Places

Smoke alarms

Did you know...

that you are twice as likely to die in a fire if you don't have working smoke alarms?

Smoke alarms are there for the safety of you and your loved ones and, by having working smoke alarms, you are giving yourself more time to escape in the event of a fire.



Here is our smoke alarms checklist:

- ✓ Test smoke alarms monthly.
- ✓ Have a working smoke alarm on every level of your home.
- ✓ If your smoke alarm starts beeping, it may be that the batteries need changing, or that you need a new smoke alarm – **never ignore a beeping smoke alarm.**
- ✓ Do you have a fire escape plan? See the back page of this booklet and make yours.

Kitchen safety



Did you know...

that a build-up of crumbs, fat and grease on your kitchen appliances could easily catch fire?

This is why it is important to keep your kitchen appliances clean, including your toaster, hob and microwave.

Keep flammable items such as curtains and tea towels away from these appliances.

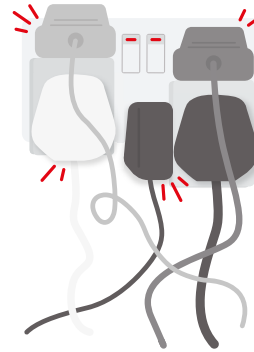
Other tips for kitchen safety include:

- | | | | | |
|--|--|--|---|--|
| Keep looking while you're cooking. Don't get distracted. | Never fill a pan more than one third full of oil or fat. | Turn pot handles inwards so they can't be bumped and children can't grab them. | Never cook under the influence of alcohol or drugs. | If a fire does occur in your property, get out, stay out and call 999. In the event of your clothes catching fire, stop, drop and roll. |
|--|--|--|---|--|

Electrical safety

When was the last time that you used your tumble dryer overnight?

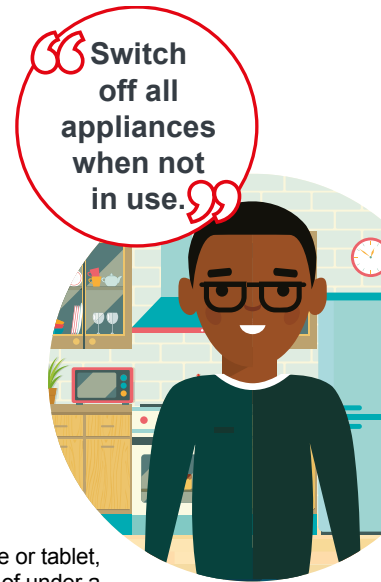
Using tumble dryers while asleep or out of the house can be dangerous, as a build-up of fluff in the filter can cause fires, so we recommend that you clean your filters regularly.



Check out our electrical safety tips below for a safer home:

- 1 Stick to one plug per socket to avoid overloading sockets.
- 2 Don't run cables under carpets or rugs. They will get hot.
- 3 While charging your mobile phone or tablet, keep it on a hard surface instead of under a pillow on a bed or on a sofa which all absorb heat.
- 4 Check cables and plugs for wear and tear. Do not use any with exposed wires.

Keep up to date with recalls or faults with appliances by visiting www.registermyappliance.org.uk



Portable heaters, log burners and open fires

Did you know that you should never hang clothes or other items on portable heaters to dry them?

While these heaters can be good for adding warmth to your home, clothes can catch fire easily.



If you have an open fire or use portable heaters, follow our guide on how to use them safely.

- ✓ Always use a fireguard with an open fire, especially if you have children or pets.
- ✓ Check that fires are out and that heaters are unplugged before you go to bed or leave the house.
- ✓ Choose a safe place to put your heater which is away from curtains and furniture.
- ✓ Have your chimney swept at least once a year. The best times to have your chimney swept are just before the start of the heating season and when it hasn't been used for a long time.



Emollient products

Did you know...

that skin emollient products can be easily ignited with a naked flame or cigarette when in contact with clothing, bedding and dressings?

Emollient products, which include creams, ointments, sprays and body wash formulations, are used by millions of people every day to manage dry, itchy or scaly skin conditions such as eczema, psoriasis and ichthyosis. They may contain paraffin or other ingredients such as shea or cocoa butter, beeswax, lanolin, nut oil or mineral oils which can leave a flammable residue.



To use these products safely, follow our tips:

- ✓ Never smoke or use naked flames, or be near to someone who is smoking whilst these products are in contact with clothing, bedding, dressings or bandages etc.
- ✓ Ensure that clothes and bedding are changed regularly when using these products, as the emollient product soaks into the fabrics, which can be a potential fire hazard.



Make sure to tell your doctor, nurse or pharmacist if you smoke while using these products, or are treating someone using these products who smokes.

Smoking

Did you know...

that smoking, especially while in bed, can easily ignite bedding, leading to a fire.

Have you ever thought about quitting smoking?



If you smoke, check out our smoking safety tips below:

- ✓ Always keep matches and lighters away from children.
- ✓ Never smoke if you have taken medication, drugs or drunk alcohol which makes you feel tired or drowsy.
- ✓ Never smoke or let someone else do so in the same room as you if you use oxygen equipment or an airflow mattress.
- ✓ Smoke outside and make sure that cigarettes are put out properly and disposed of carefully.



Smoking cessation

It's never too late to quit smoking, and health begins to improve when you stop.

1. Second hand smoke is harmful to the health of people and pets.
2. If you use e-cigarettes, you should always use the correct charger and never leave the device on charge unattended.
3. There are services who can offer support to smokers who wish to quit and would like to try an e-cigarette.

Candle safety

Did you know...

that you should always use candles, divas and tea lights in a proper secure holder?

This is because naked flames which are not in protective holders can set fire to other items easily.

- ✓ Never have a naked flame within the reach of children or pets.
- ✓ Keep the flame at a safe distance from curtains, furniture, long hair, and clothing, including saris etc.
- ✓ Always extinguish candles when going to bed or leaving the room.
- ✓ If you are using a diva to worship, only use as much oil or ghee as you need to last your prayers.



Illicit tobacco

Did you know...

that illicit tobacco products are often more likely to cause a fire?

Illicit tobacco refers to a wide range of illegal tobacco products, including those that are smuggled, counterfeit and illicit (cheap) white cigarettes.

Some of the above may contain even more harmful 'substitute' substances. They may not be made with fire-safe paper, meaning they would be more likely to cause fires if left unattended or stubbed out.



Keep warm to stay well

Did you know...

that you should move furniture away from walls and radiators in your house?

This is so that warm air can circulate around the room, making sure you stay warmer in your home.

It is a good idea to sign up to the priority register with your energy supplier, you will be prioritised in the event of an unplanned power cut and get access to a range of free services, such as help with meter readings and getting your bills printed in large print or Braille.

Alcohol

Did you know...

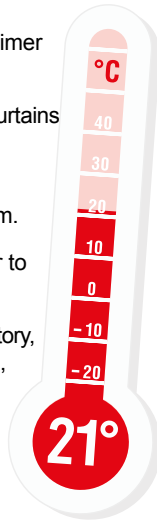
that you should try to have at least two alcohol-free days a week?

This is to ensure that you are drinking in a way that is not harmful to your body.



Check out our electrical safety tips below for a safer home:

- 1 It is recommended that you keep your living room at a temperature of 21 degrees, and other rooms at 18 degrees.
- 2 Reduce your heating bill by using a timer to regulate your heating.
- 3 Close internal doors and draw your curtains at night to keep warm air in the room.
- 4 Make sure that you have plenty of hot food and drinks to keep you warm.
- 5 Have your boiler serviced every year to make sure that it's working properly.
- 6 If you have conditions such as respiratory, cardiovascular or mobility symptoms, you may be able to get assistance with keeping your home warm.
- 7 Reduce heat loss and problems with damp and mould by insulating your loft and walls. Install 300mm of insulation in the loft and insulate the walls and draughtproof floors, windows and doors.



Follow our tips on how to drink safely:

- ✓ New advice says men and women who drink regularly should consume no more than 14 units a week - equivalent to six pints of average-strength beer or ten small glasses of low-strength wine.
- ✓ Drinking less alcohol will reduce your risk of developing serious health issues such as cancer, liver or heart disease and could contribute to lowering your blood pressure.
- ✓ It's recommended that anyone wanting to reduce the amount they drink should do so slowly over a period of time.
- ✓ It is generally best to reduce your drinking by two units over two days, or one unit per day.
- ✓ If you do drink and are looking to reduce your alcohol intake it is recommended to keep a diary and record how many units you are having a day and the reason for drinking.

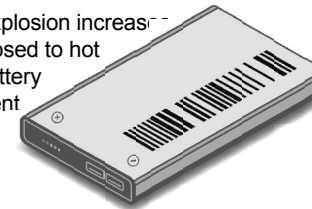
Lithium batteries

Did you know...

that lithium batteries are found in many household items: mobile phones, cameras, laptops and desktop computers as well as electronic cigarettes?

Although accidents are rare, those that do occur may be significant, resulting in a fire or even an explosion.

The risk of fire or explosion increases if the battery is exposed to hot conditions or the battery or internal component is damaged.



You can reduce the risk of an accident in several ways

- ✓ Avoid storing them at high temperatures. Don't keep batteries in hot vehicles, don't allow a blanket to cover your laptop and don't keep your mobile phone in a warm pocket.
- ✓ Keep the battery and device away from sun exposure and store in a cool place.
- ✓ Use the correct manufacturer's charger.
- ✓ Do not place mobile phones or electronic cigarettes under pillows or blankets while charging.
- ✓ If you have dropped or damaged your mobile phone, have it checked by a professional.
- ✓ Avoid overcharging your batteries.

Stay safe - reduce your fire risk

Did you know...

that if you store large amounts of possessions in or around your home, you may be putting yourself at increased risk of fire?

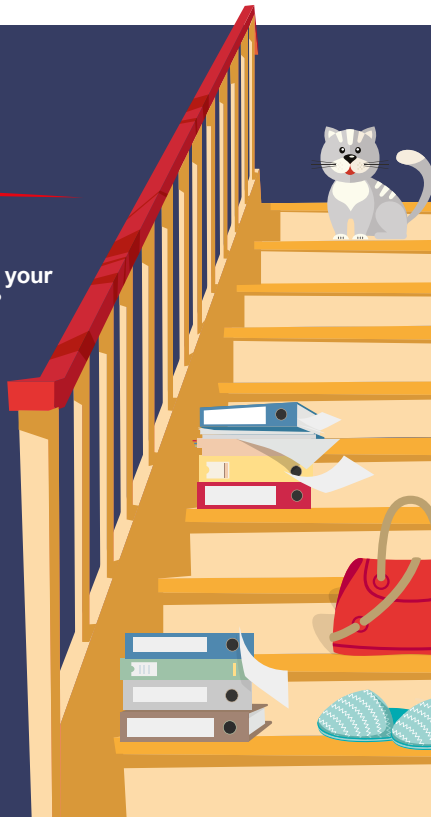
Escape route – Make sure all doors are closed at night to stop the spread of fire. Make sure your escape route is clear of possessions and that you have a clear escape route in communal areas of flats.

Electrical – Avoid placing items on or close to heaters, lamps or other electrical equipment. Avoid overloading sockets.

Smoking – Use a proper ashtray on a flat, safe surface or try to smoke outside. Never smoke in bed or when you are sleepy.

Cluttered kitchen? – Keep the cooking area clear as tea towels and cloths are flammable. Avoid using the oven, grill or hob for storage. Turn off all appliances when not in use.

Stairs a state? – Keep stairs clear in order to reduce the risk of slips, trips and falls. Have an unobstructed means of escape to allow emergency services to rescue you if needed. Newspapers stored in bulk increase the fuel for a fire.



Celebrations & festivities

Did you know...

850 accidental fires in the home are started every year in England from candles!

Follow these top tips to celebrate safely in your home:

- 1 Put candles out when you leave the room, and make sure they're completely out at night.
- 2 Check fairy lights are in good working order and always unplug them before leaving your home or going to bed. Never overload electrical sockets.
- 3 Don't let bulbs or naked flames touch anything that can burn easily, such as paper, wreaths, garlands, inflatables, presents, curtains or fabrics.
- 4 Ensure matches and lighters are returned to a safe place once candles, divas or tea lights are lit.
- 5 Take care around open flames such as bonfires and barbecues – even clothes labelled 'low flammability' can catch fire.
- 6 Take extra care when drinking alcohol.
- 7 Celebrations often involve food. Read our Kitchen Safety section and keep looking while you're cooking!



Mobility scooters



How to stay safe with your mobility scooter:

- ✓ Have your mobility scooter serviced regularly to make sure it is safe to use.
- ✓ Make sure your mobility scooter doesn't block yours or someone else's escape route.
- ✓ Make sure your charging area is safe and clear from clutter.
- ✓ If you live in a flat, check to see if there are designated areas to charge/keep your scooter.
- ✓ Avoid charging your scooter overnight.



Staying steady on your feet

Did you know...

that as we become older, our bones tend to become thinner and weaker?

This is why it is important to avoid trips and falls wherever possible as they could result in a fracture. In older age we are also at a higher risk of developing a condition called osteoporosis, which causes bones to break more easily.



Follow our tips on avoiding falls below:

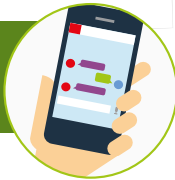
- 👣 Remove trip hazards from your home, including clutter, trailing wires and frayed carpets.
- 👣 Use non-slip mats and rugs or arrange for carpet grips to be fitted underneath.
- 👣 Make sure that you use a grip mat in the bath and shower, and arrange for grab rails to be fitted to assist you in getting in and out.
- 👣 Get help with tasks that you cannot do safely on your own.



Bedtime checklist

- ✓ Close doors at night to stop a fire from spreading.
- ✓ Make sure that all electrical appliances are switched off and unplugged.
- ✓ Check your cooker is off.
- ✓ Avoid leaving your washing machine or tumble dryer on overnight.
- ✓ Make sure that all candles and cigarettes are put out properly.
- ✓ Make sure exits are clear at all times.
- ✓ Keep your door keys and window keys where everyone can find them.

Keep your phone handy when you go to bed, in case of an emergency



Fire escape plan

1. Draw up an escape plan so that everyone in the house knows what to do if the smoke alarm goes off during the night.
2. Establish your route out of the house.
3. Include alternative routes in case the way is blocked.
4. Make sure that everyone knows where to gather once they are out of the house.

If you are woken by your smoke alarm - stop, think, act!

Wake all the members of your family and make your way out together through the nearest exit

Get out, stay out and call 999!



www.leics-fire.gov.uk

Telephone: 0116 210 5555

Email: info@leics-fire.gov.uk

Text: 07860 063686 (For Deaf, deafened and hard of hearing people only. Not to be used in an emergency)

In case of emergency, dial 999

Follow @LeicsFireRescue



Our commitment to you

In this booklet, we have included information about fire safety and your health and wellbeing, which is part of our collaborative approach with our partner agencies in health, social care and local authorities.

Leicestershire Fire and Rescue Service will keep your information as a record of our visit, and to help us evaluate our work. Evaluation may be carried out by an approved and trusted third party on our behalf.

We will keep your details stored securely and will only share your information with other services if you agree, or if we have to, for example, to keep you safe from serious harm.

LEICESTERSHIRE
FIRE and RESCUE SERVICE