

Community Risk Model 2022



What is it?



Uses

Provides background for planning changes in emergency cover.

Data

Contains 5 years of incident data as well as the level of deprivation for each area.

Risk

Shows the level of risk for 611 small areas which contain an average of 1500 people.



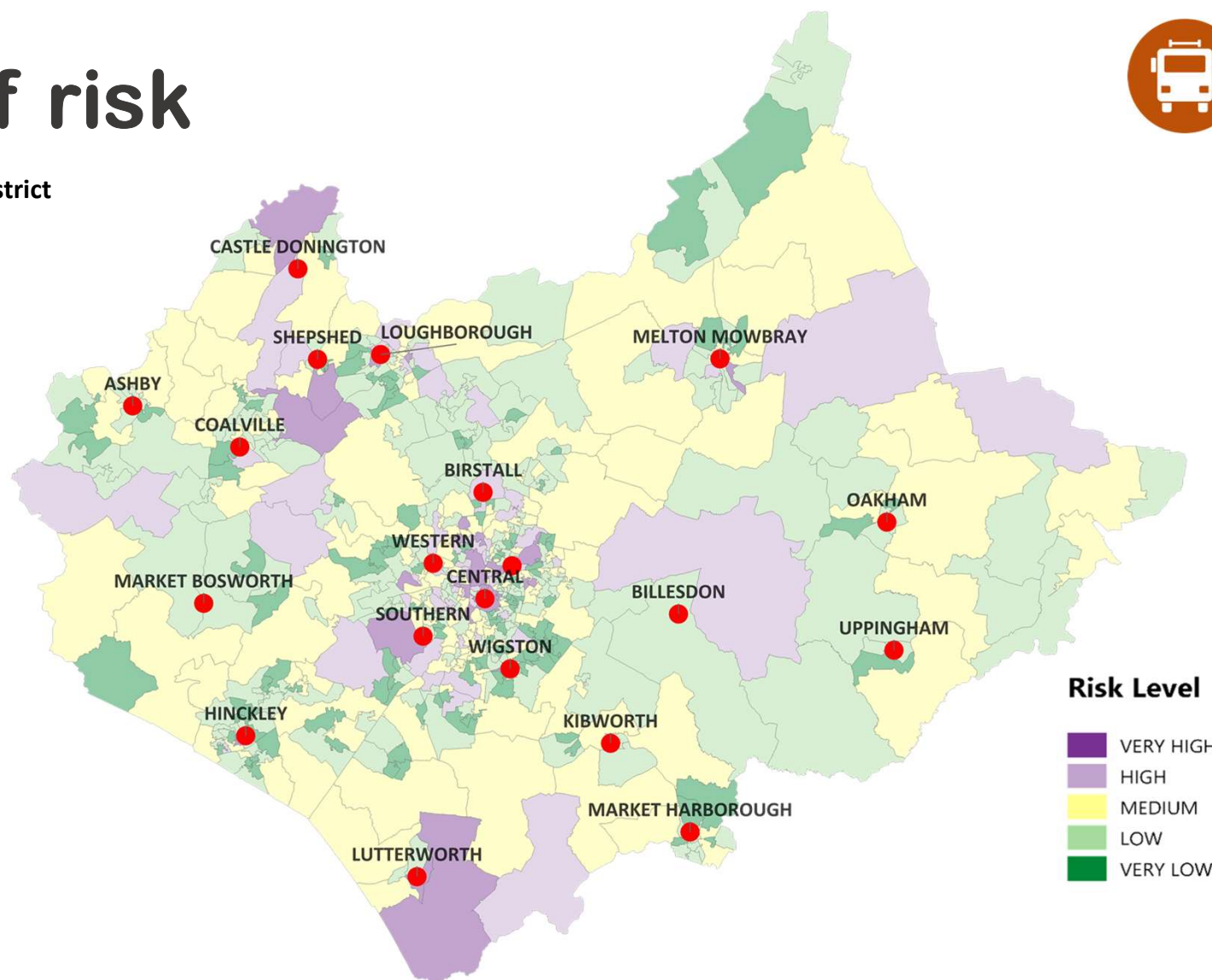
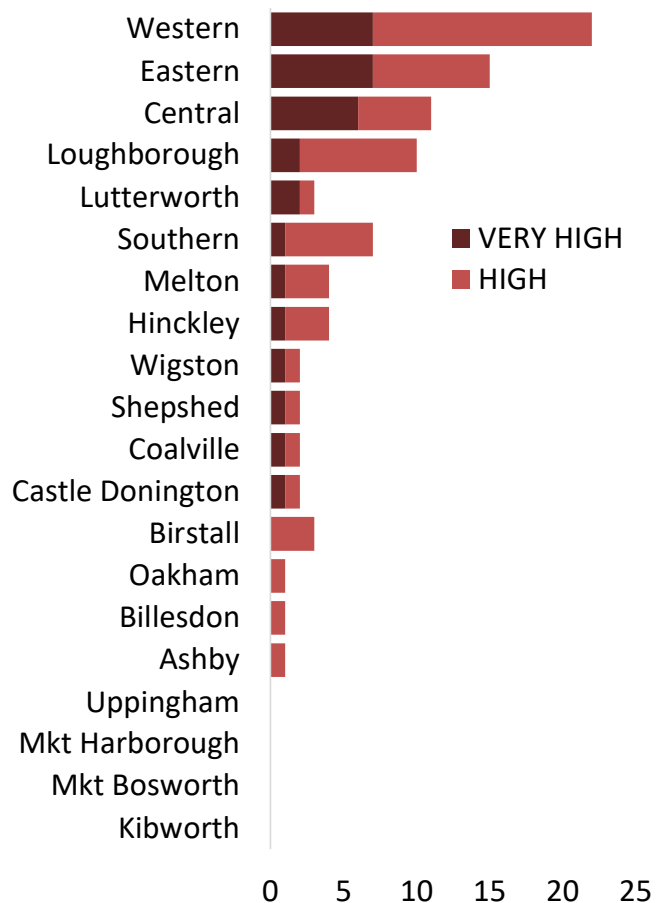
How is risk calculated?

Category	Weighting
Dwelling fires	10%
Multiple deprivation	20%
Road traffic collisions	35%
Fire casualties	5%
Life risk rescues	25%
Commercial fires	5%

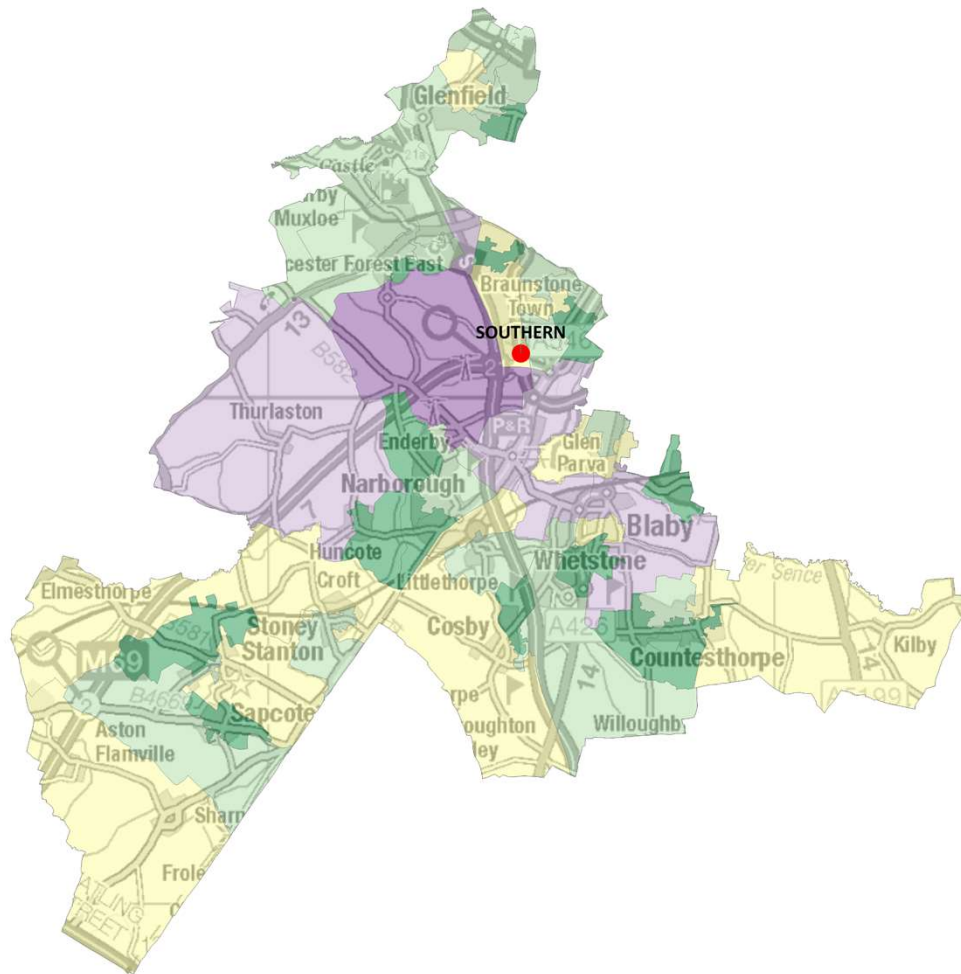
The spread of risk



No. of very high and high areas by sub-district



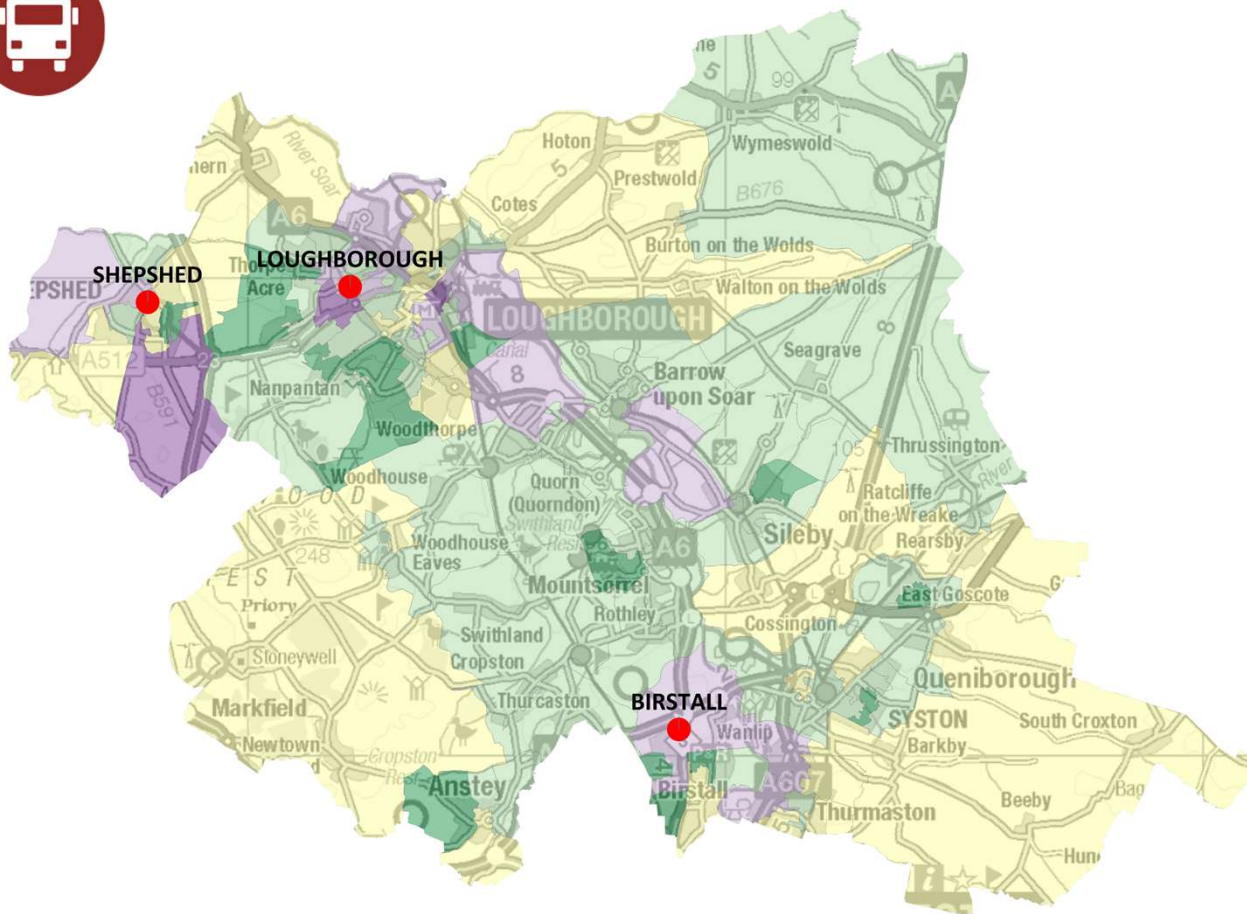
Blaby District Community Risk



Risk Level



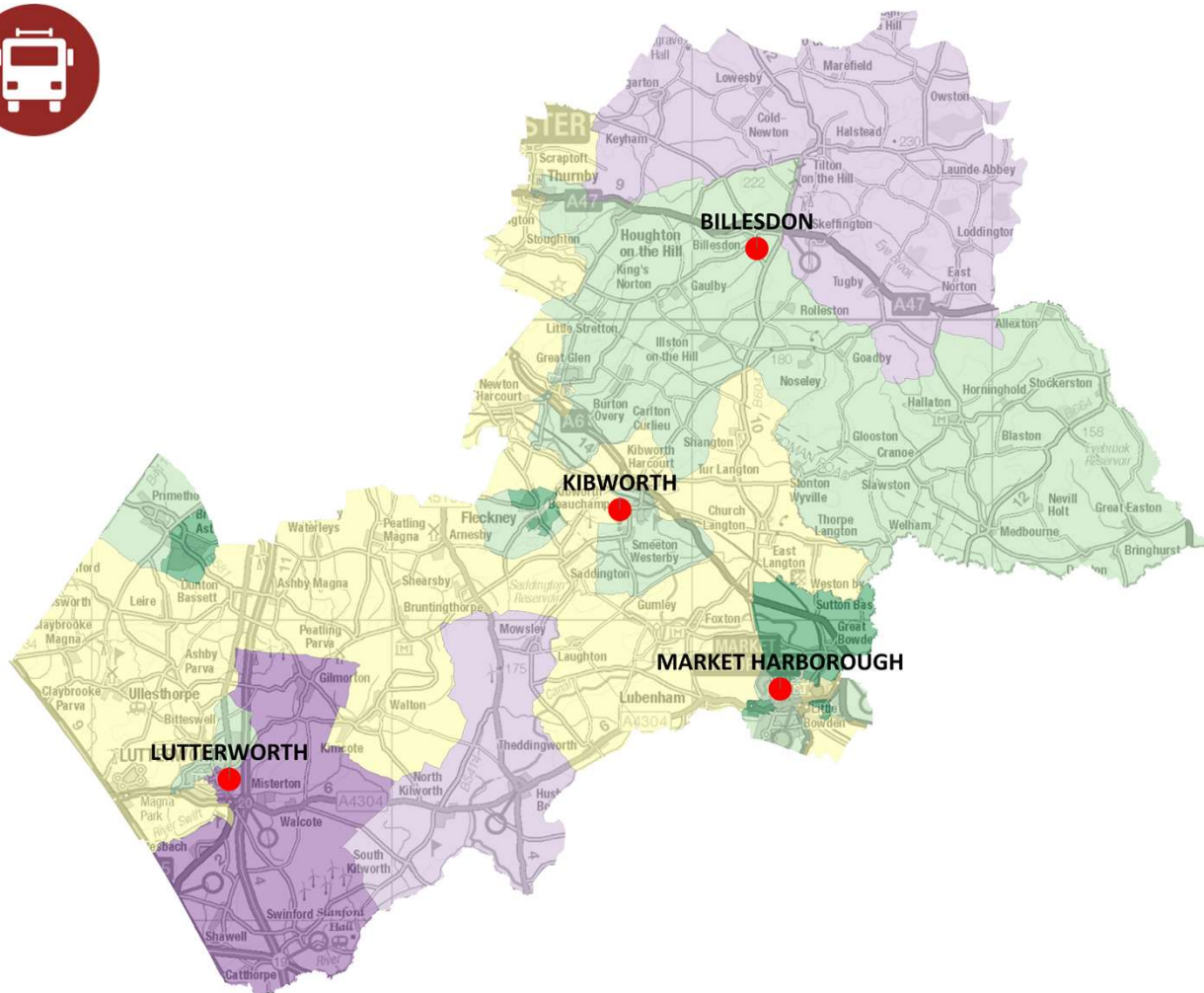
Charnwood District Community Risk



Risk Level



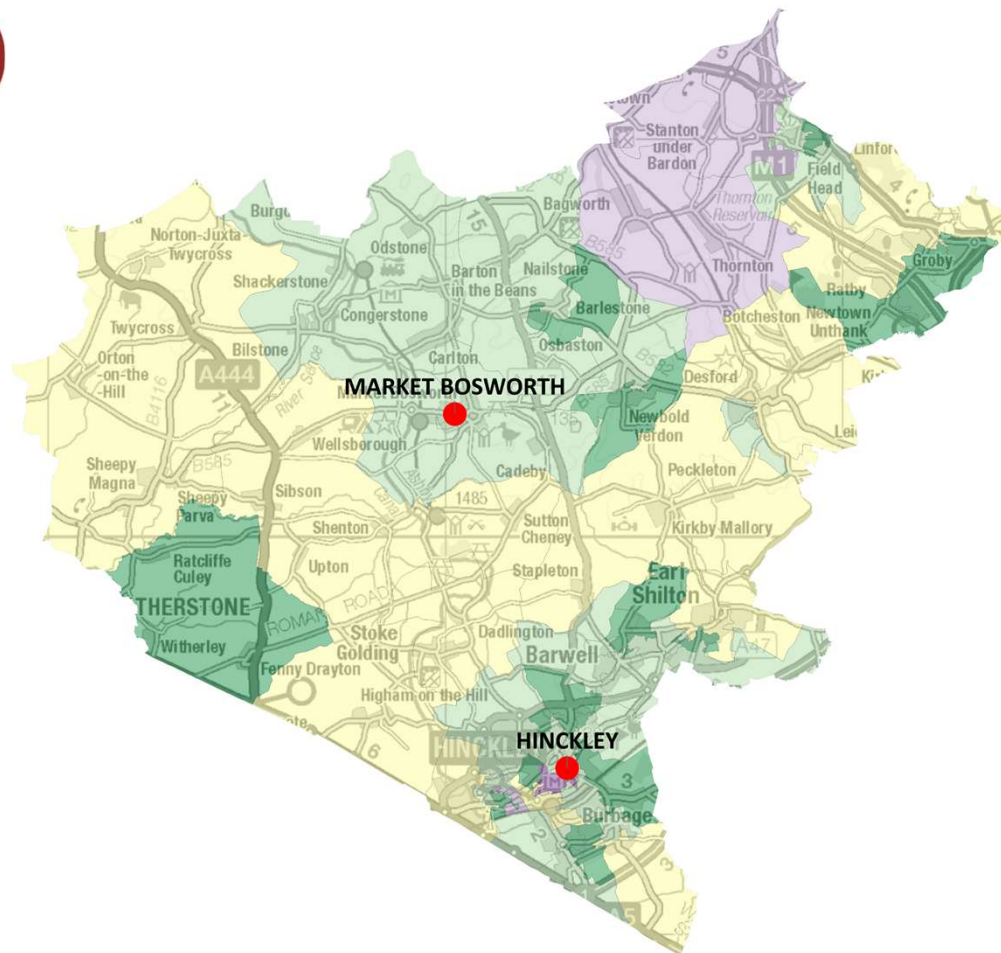
Harborough District Community Risk



Risk Level

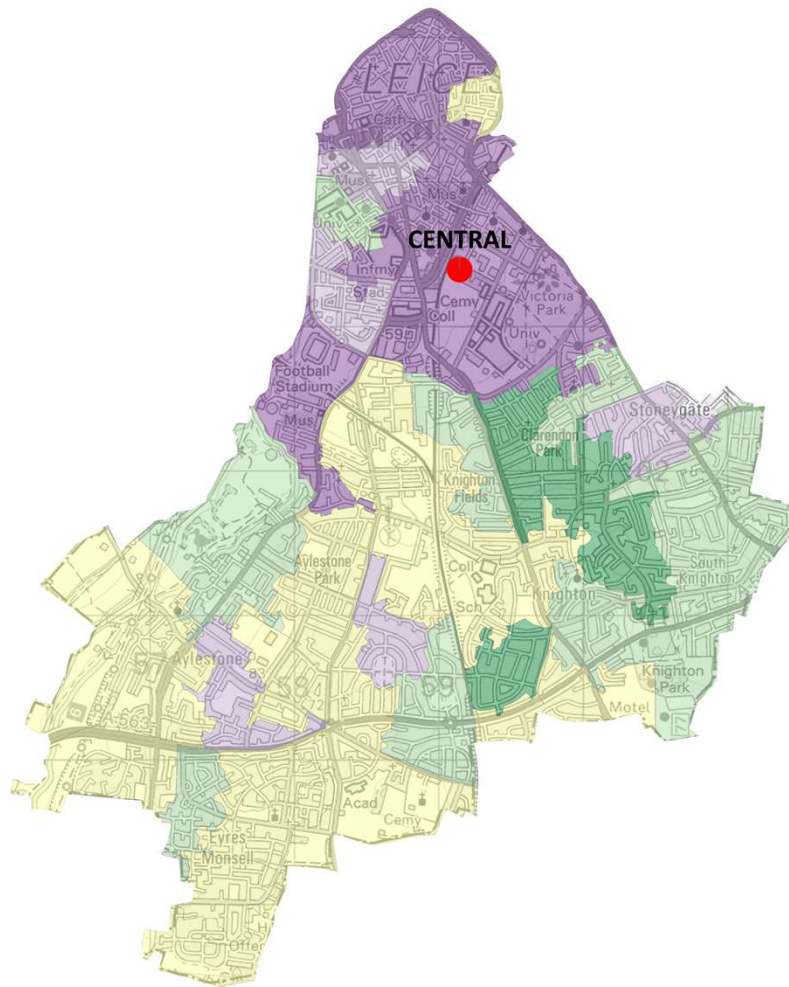


Hinckley and Bosworth District Community Risk



Risk Level

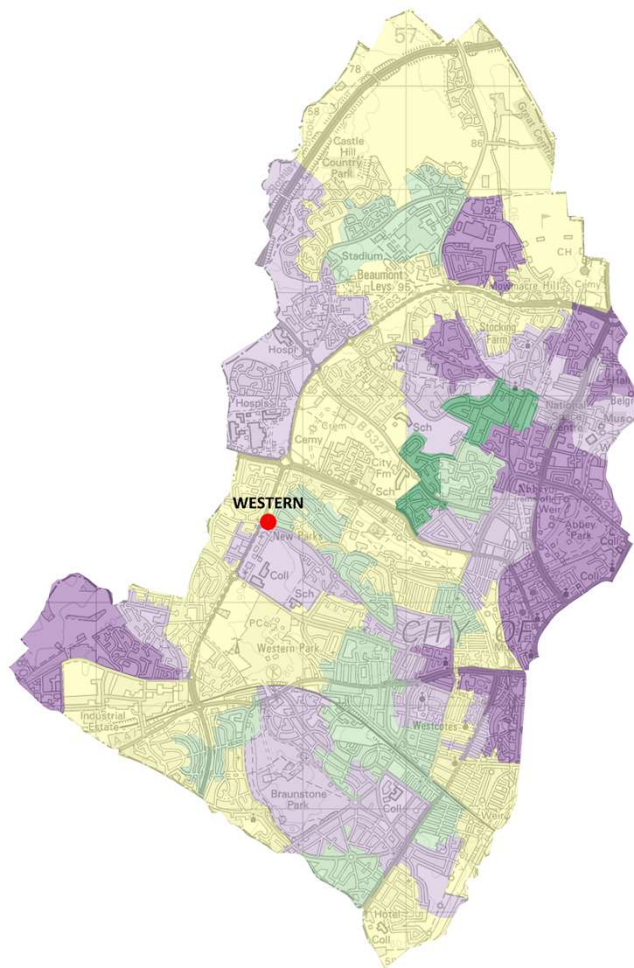




	VERY HIGH
	HIGH
	MEDIUM
	LOW
	VERY LOW



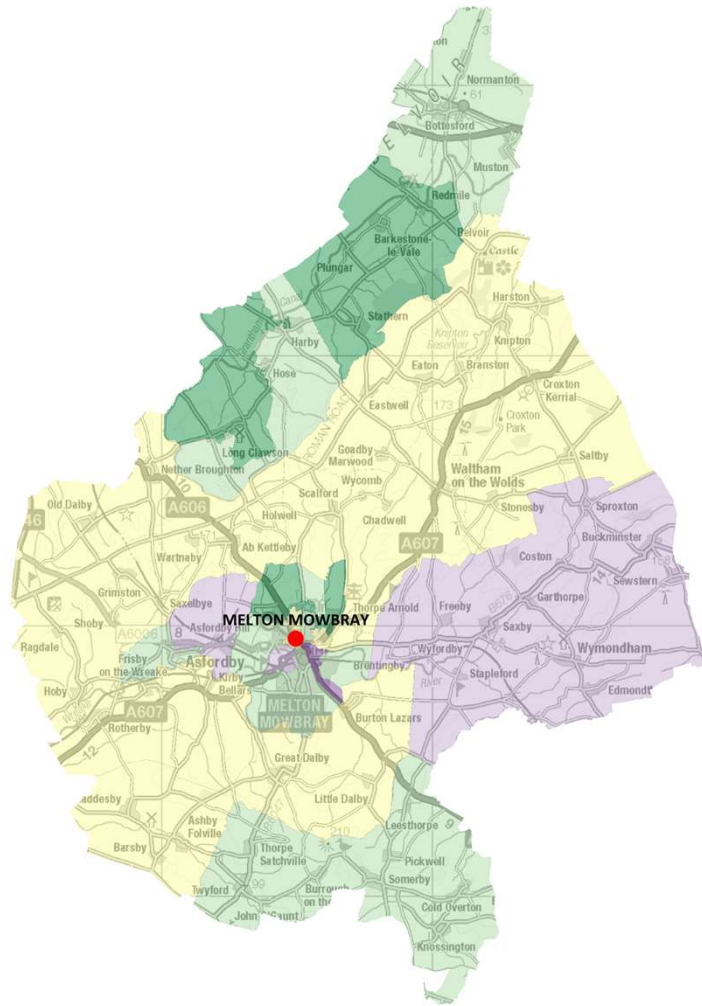
Leicester Western District Community Risk



Risk Level



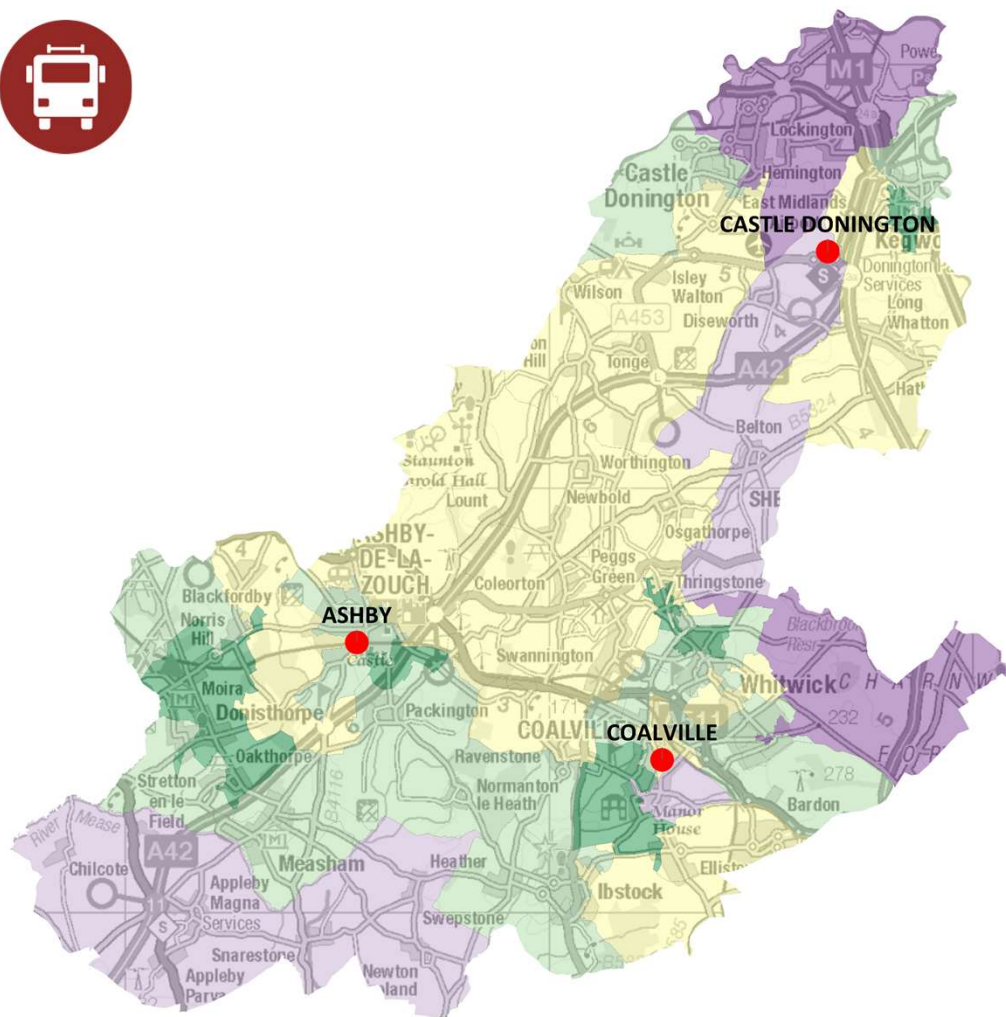
Melton District Community Risk



Risk Level



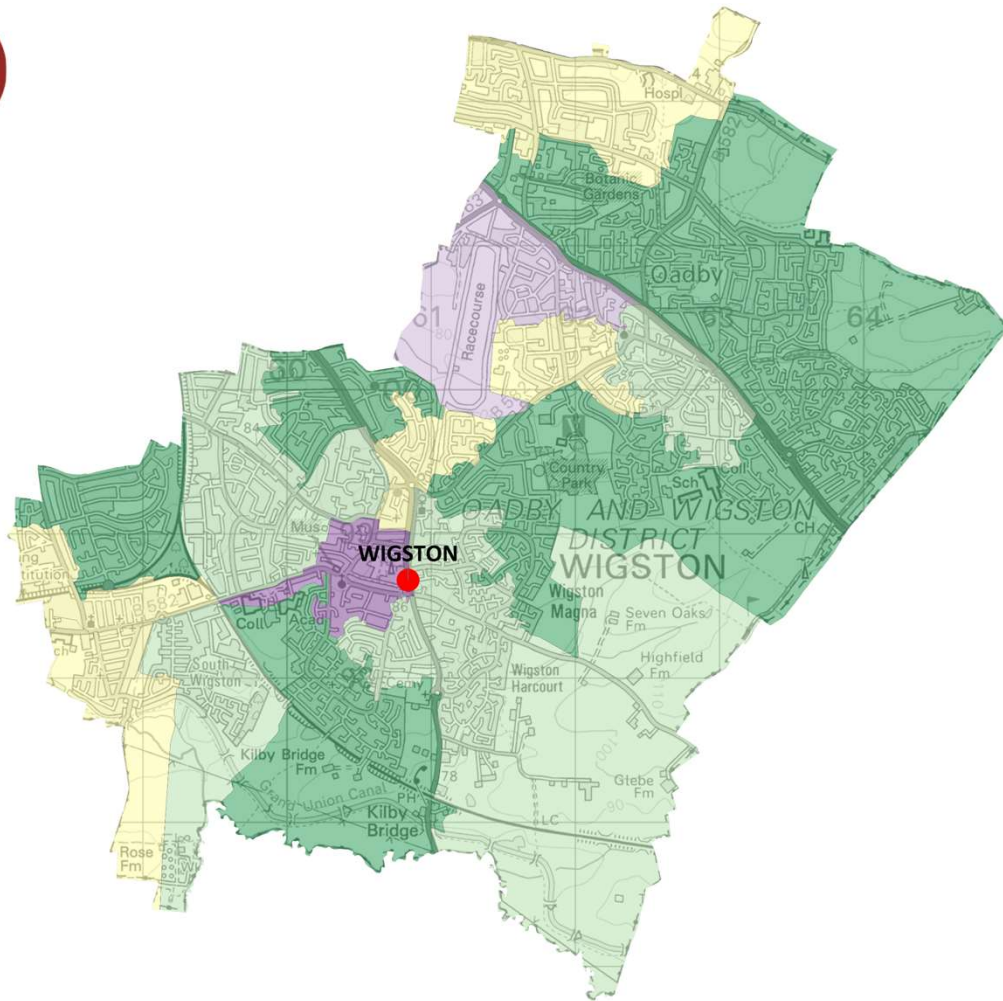
North West Leicestershire District Community Risk



Risk Level



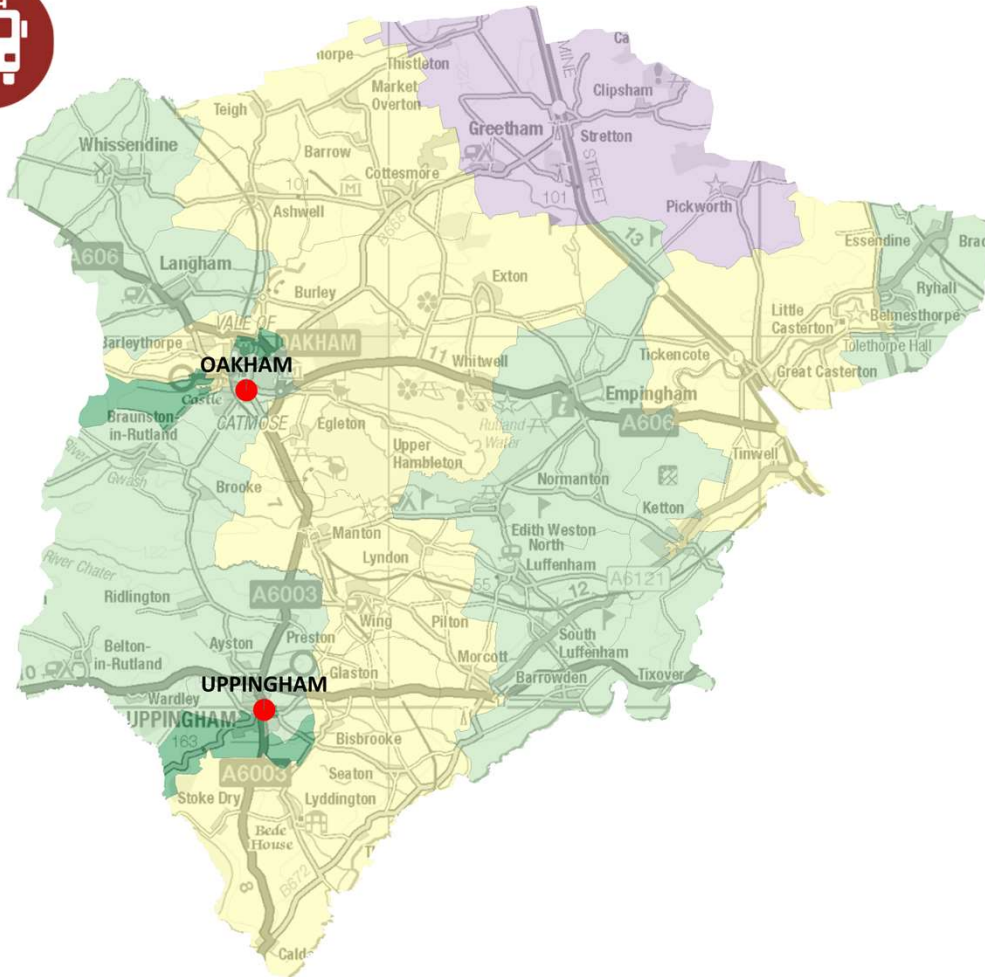
Oadby & Wigston District Community Risk



Risk Level



Rutland District Community Risk



Risk Level

